

LIUGONG

915F_{CR} EXCAVATOR

ALL NEW
F SERIES

Engine	Cummins F3.8
Net Power	84.5 kW
Operating Weight	15,400-16,300 kg
Bucket Capacity	0.55 m ³ (0.72 yd ³)



TOUGH WORLD. TOUGH EQUIPMENT.



SPECIFICATIONS

Operating weight 15,400-16,300 kg (33,951-35,935 lbs)

Operating weight includes coolant, lubricants, full fuel tank, cab, standard shoes, monoboom, arm, bucket and operator 75 kg (165 lbs).

Bucket capacity 0.55 m³ (0.72 yd³)

ENGINE

Description

Cummins EU Stage V, turbocharged, 4 cylinder, 4 stroke, water cooled.

Emission rating Stage V

Engine manufacturer Cummins

Engine model F3.8

Aspiration Turbocharged

Charged air cooling Aftercooler

Cooling fan drive Direct

Displacement 3.8 L (1 gal)

Rated speed 2,200 rpm

Engine Output - Gross (SAE J1349 / ISO 9249) 90 kW (120.7 hp)

Engine Output - Net (SAE J1995 / ISO 14396) 84.5 kW (113.3 hp)

Maximum torque 500 N-m (369 lbf-ft) @1,500 rpm

Bore x Stroke 102 x 115 mm (4" x 4.5")

UNDERCARRIAGE

Track shoe each side 44 (1.7")

Link pitch 175 mm (6.9" metal)

Shoe width, triple grouser 500 mm (20")

Bottom rollers each side 7

Top rollers each side 2

SWING SYSTEM

Description

Planetary gear reduction driven by high torque axial piston motor, with oil disk brake. Swing parking brake resets within five seconds after swing pilot controls return to neutral.

Swing speed 11.3 rpm

Swing torque 36,790 N-m (27,135 lbf-ft)

HYDRAULIC SYSTEM

Main pump

Type Two variable displacement

Maximum flow 2 x 117 L/min (2 x 30.9 gal/min)

Relief valve setting

Implement 34.3 / 37 MPa (4,975 / 5,410 psi)

Travel circuit 34.3 MPa (4,975 psi)

Slew circuit 26.5 MPa (3,843 psi)

Pilot circuit w 3.9 MPa (566 psi)

Hydraulic cylinders

Boom Cylinder – Bore x Stroke Φ 105 x 1,000 mm (4.1" x 3'3")

Arm Cylinder – Bore x Stroke Φ 115 x 1,175 mm (4.5" x 3'10")

Bucket Cylinder – Bore x Stroke Φ 95 x 885 mm (3.7" x 2'11")

ELECTRIC SYSTEM

System voltage 12 V

Batteries 24 V

Alternator 24 V - 70 A

Starter 24 V - 4.8 kW (24 V - 6.4 hp)

SERVICE CAPACITIES

Fuel tank 200 L (52.8 gal)

Engine oil 12 L (3.2 gal)

Final drive (each) 2.5 L (0.7 gal)

Swing drive 3 L (0.8 gal)

Cooling system 20 L (5.3 gal)

Hydraulic reservoir 100 L (26.4 gal)

Hydraulic system total 160 L (42.3 gal)

DEF tank 25 L (6.6 gal)

SOUND PERFORMANCE

Interior Sound Power Level (ISO 6396) 72 dB(A)

Exterior Sound Power Level (ISO 6395) 99 dB(A)

DRIVE AND BRAKES

Description

Steering controlled by two hand levers with pedals.

Max. travel speed High: 4.9 km/h (3 mph)
Low: 2.9 km/h (1.8 mph)

Gradeability 35%/70%

Max. drawbar pull 122 kN (27,427 lbf)



DIMENSIONS	MONO BOOM	MONO BOOM	TWO-PIECE BOOM
Boom	4,600 mm		5,050 mm
Arm Options	2,500 mm	2,900 mm	2,500 mm
A Shipping Length	7,335 mm	7,290 mm	7,590 mm
B Shipping Height – Top of Boom	2,980 mm	3,255 mm	3,115 mm
C Undercarriage Width - 500 mm (20") shoes	2,490 mm		2,490 mm
- 600 mm (24") shoes	2,590 mm		2,590 mm
- 700 mm (28") shoes	2,690 mm		2,690 mm
D Shipping length on ground	4,470 mm	4,410 mm	4,965 mm
E Track Gauge	1,990 mm		1,990 mm
F Length to Center of Rollers	3,010 mm		3,010 mm
G Track Length	3,745 mm		3,745 mm
H Overall Width of Upper Structure	2,490 mm		2,490 mm
J Overall Width of Upper Structure including cab handrail	2,570 mm		2,570 mm
K Overall Width of Upper Structure including cab rearview mirror	2,790 mm		2,790 mm
L Tail Swing Radius	1,525 mm		1,525 mm
M Distance of swing center to blade	2,800 mm		2,800 mm
N Counterweight Ground Clearance	935 mm		935 mm
P Overall Height of Counterweight	2,215 mm		2,215 mm
Q Overall Height of Cab	2,885 mm		2,885 mm
Overall Height of Cab including Halo	3,025 mm		3,025 mm
Overall Height of Cab including FOP's Guard	3,015 mm		3,015 mm
R Overall Height of Platform handrail	2,935 mm		2,935 mm
S Min. Ground Clearance	450 mm		450 mm
T Track Shoe Width	500 mm		500 mm
U Blade, max. lifting height	540 mm		540 mm
V Blade, max. digging depth	540 mm		540 mm
Blade width (with 500 mm shoes)	2,490 mm		2,490 mm
Blade width (with 600 mm shoes)	2,590 mm		2,590 mm
Blade width (with 700 mm shoes)	2,690 mm		2,690 mm

MACHINE WEIGHTS & GROUND PRESSURE

Shoe width	MONO BOOM		TWO-PIECE BOOM	
	Operating weight	Ground pressure	Operating weight	Ground pressure
500 mm	15,400 kg	45.8 kPa	15,900 kg	47.3 kPa
600 mm	15,600 kg	38.7 kPa	16,100 kg	39.9 kPa
700 mm	15,800 kg	33.6 kPa	16,300 kg	34.6 kPa
500 mm rubber crawler pads	15,400 kg	45.6 kPa	15,900 kg	47.0 kPa

Operating weight, including 2,500 mm arm, 480 kg bucket, operator, lubricant, coolant, full fuel tank and the standard equipment. Additional weight with blade: +1,000 kg



BOOM DIMENSIONS

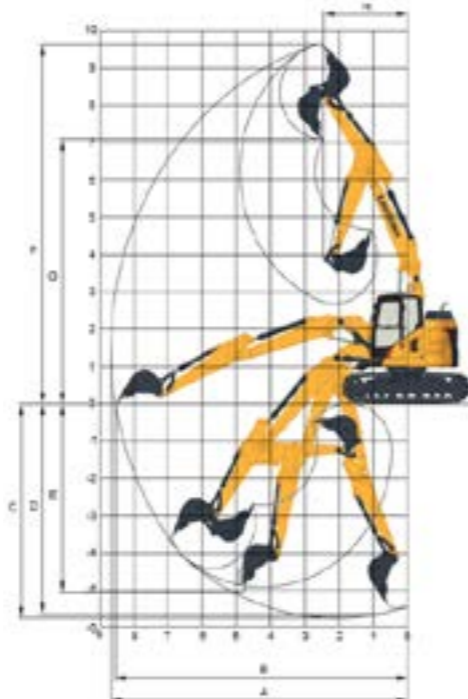
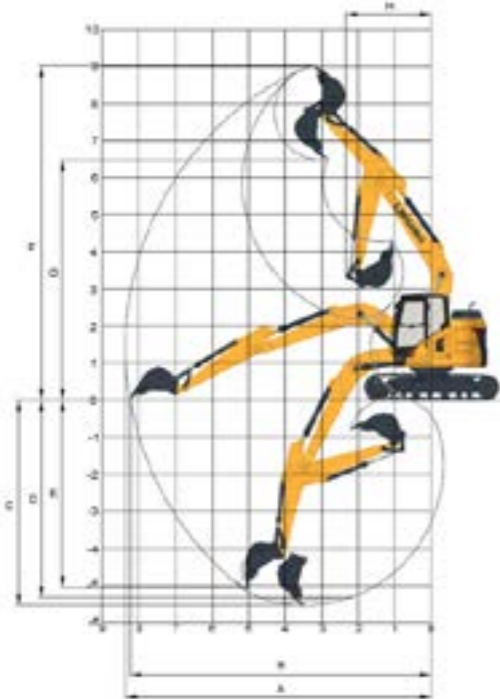
Boom	Monoboom	2 Piece Boom
A Length	4,800 mm	5,050 mm
B Height	1,500 mm	1,600 mm
C Width	750 mm	750 mm
Weight	1,170 kg	1,460 kg

Cylinder, piping and pin included. Boom cylinder pin excluded.

ARM DIMENSIONS

Arm	2,500 mm	2,900 mm
A Length	3,300 mm	3,700 mm
B Height	650 mm	700 mm
C Width	450 mm	450 mm
Weight	640 kg	670 kg

Cylinder, linkage and pin included.



WORKING RANGE

	MONO BOOM	TWO-PIECE BOOM
Boom Length	4,800 mm	5,050 mm
Arm Options	2,500 mm	2,900 mm
A. Max. Digging Reach	8,365 mm	8,670 mm
B. Max. Digging Reach on Ground	8,235 mm	8,535 mm
C. Max. Digging Depth	5,515 mm	5,745 mm
D. Max. Digging Depth, 2.5m (8') level	5,300 mm	5,630 mm
E. Max. Vertical Wall Digging Depth	5,030 mm	5,060 mm
F. Max. Cutting Height	9,040 mm	9,640 mm
G. Max. Dumping Height	6,510 mm	7,090 mm
H. Min. Front Swing Radius	2,325 mm	2,435 mm
Bucket Digging Force (ISO)	Normal	89.8 kN
	Power Boost	96.9 kN
Arm Digging Force (ISO)	Normal	64.9 kN
	Power Boost	70 kN
Bucket Capacity (Standard)	0.55 m³	0.55 m³
Bucket Tip Radius	1,085 mm	1,085 mm

Lifting capacity at the arm end without bucket. For lifting capacity including bucket, weight of the bucket or the bucket with quick coupler must be deducted from the lifting capacities. Lifting capacities are based on the machine standing on a firm, uniform supporting surface.



- Do not attempt to lift or hold any load that is greater than these rated values at their specified load radius and height. Weight of all accessories must be deducted from the above lifting capacities.
- The rated loads are in compliance with ISO 10567 Hydraulic Excavator Lift Capacity Rating Standard. They do not exceed 87% of hydraulic lifting capacity or 75% tipping load.
- Ratings at bucket lift hook.
- Lifting capacities are based on machine standing on level, firm and uniform ground.
- *Indicates the load is limited by hydraulic capacity rather than tipping capacity.
- Operator should be fully acquainted with the Operator's and Maintenance Instructions before operating this machine and rules for the safe operation of equipment should be adhered to at all times.

LIFTING CAPACITY (METRIC)

915FCR with 500 mm Shoes, MONO Boom, 2,500 mm Arm

Conditions
 Boom length: 4,800 mm
 Arm length: 2,500 mm
 Shoes: 500 mm triple grouser shoes
 Bucket: None
 Counterweight: 3,500 kg
 Blade: None

B/A (m)	1.5		3.0		4.5		6		MAX REACH		A (m)	
	Cf	Cs	Cf	Cs	Cf	Cs	Cf	Cs	Cf	Cs		
6	kg				*3,600	*3,600			*2,050	*2,050	5.4	
4.5	kg				*3,800	*3,800	*3,350	2,500	*2,350	2,300	6.3	
3	kg			*6,150	*6,150	*4,500	3,750	*3,800	2,450	*2,000	1,950	6.9
1.5	kg			*8,450	6,100	*5,350	3,500	3,900	2,350	*2,550	1,850	7.0
0	kg			*7,200	5,750	5,800	3,300	3,800	2,250	*2,400	1,850	6.9
-1.5	kg	*5,150	*5,150	*8,600	5,700	5,700	3,200	3,800	2,200	*2,800	2,050	6.4
-3	kg	**9,150	**9,150	*7,150	5,800	*4,900	*3,250			*3,750	2,600	5.4

LIFTING CAPACITY (METRIC)

915FCR with 600 mm Shoes, MONO Boom, 2,500 mm Arm

Conditions
 Boom length: 4,800 mm
 Arm length: 2,500 mm
 Shoes: 600 mm triple grouser shoes
 Bucket: None
 Counterweight: 3,500 kg
 Blade: None

B/A (m)	1.5		3.0		4.5		6		MAX REACH		A (m)	
	Cf	Cs	Cf	Cs	Cf	Cs	Cf	Cs	Cf	Cs		
6	kg				*3,600	*3,600			*2,050	*2,050	5.4	
4.5	kg				*3,800	*3,800	*3,350	2,550	*2,350	2,350	6.3	
3	kg			*6,150	*6,150	*4,500	3,800	*3,800	2,500	*2,000	*2,000	6.9
1.5	kg			*8,450	6,200	*5,350	3,550	4,000	2,400	*2,550	1,900	7.0
0	kg			*7,200	5,850	*5,850	3,350	3,900	2,300	*2,400	1,900	6.9
-1.5	kg	*5,150	*5,150	*8,600	5,800	*5,800	3,250	3,850	*2,250	*2,800	2,100	6.4
-3	kg	*9,150	*9,150	*7,150	*5,900	*4,900	*3,300			*3,750	*2,650	5.4



Lifting capacity at the arm end without bucket.
For lifting capacity including bucket, weight of the bucket or the bucket with quick coupler must be deducted from the lifting capacities.
Lifting capacities are based on the machine standing on a firm, uniform supporting surface.



Rating over-front (Cf)



Rating over-side (Cs)

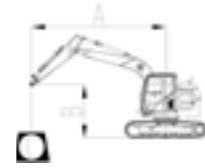
- Do not attempt to lift or hold any load that is greater than these rated values at their specified load radius and height. Weight of all accessories must be deducted from the above lifting capacities.
- The rated loads are in compliance with ISO 10567 Hydraulic Excavator Lift Capacity Rating Standard. They do not exceed 87% of hydraulic lifting capacity or 75% tipping load.
- Ratings at bucket lift hook.
- Lifting capacities are based on machine standing on level, firm and uniform ground.
- *Indicates the load is limited by hydraulic capacity rather than tipping capacity.
- Operator should be fully acquainted with the Operator's and Maintenance Instructions before operating this machine and rules for the safe operation of equipment should be adhered to at all times.

LIFTING CAPACITY (METRIC)

915FCR with 700 mm Shoes, MONO Boom, 2,500 mm Arm

Conditions

Boom length: 4,800 mm
Arm length: 2,500 mm
Shoes: 700 mm triple grouser shoes
Bucket: None
Counterweight: 3,500 kg
Blade: None



A: Load radius
B: Load point height
C: Lifting capacity rating
Cf: Rating loads over front
Cs: Rating loads over side or 360°

B/A (m)	1.5		3.0		4.5		6		MAX REACH		A (m)	
	Cf	Cs	Cf	Cs	Cf	Cs	Cf	Cs	Cf	Cs		
6	kg				*3,600	*3,600			*2,050	*2,050	5.4	
4.5	kg				*3,800	*3,800	*3,350	2,600	*2,350	*2,350	6.3	
3	kg			*6,150	*6,150	*4,500	3,850	*3,800	2,550	*2,000	*2,000	6.9
1.5	kg			*8,450	6,300	*5,350	3,600	4,050	2,450	*2,550	1,950	7.0
0	kg			*7,200	5,950	*5,850	3,400	3,950	2,350	*2,400	1,950	6.9
-1.5	kg	*5,150	*5,150	*8,600	5,900	*5,800	3,350	3,900	*2,300	*2,800	2,150	6.4
-3	kg	*9,150	*9,150	*7,150	*6,000	*4,900	*3,350		*3,750	*2,700	5.4	

LIFTING CAPACITY (METRIC)

915FCR with 500 mm Shoes, MONO Boom, 2,500 mm Arm

Conditions

Boom length: 4,800 mm
Arm length: 2,500 mm
Shoes: 500 mm rubber track shoes
Bucket: None
Counterweight: 3,500 kg
Blade: None



A: Load radius
B: Load point height
C: Lifting capacity rating
Cf: Rating loads over front
Cs: Rating loads over side or 360°

B/A (m)	1.5		3.0		4.5		6		MAX REACH		A (m)	
	Cf	Cs	Cf	Cs	Cf	Cs	Cf	Cs	Cf	Cs		
6	kg				*3,600	*3,600			*2,050	*2,050	5.4	
4.5	kg				*3,800	*3,800	*3,350	2,500	*2,350	2,300	6.3	
3	kg			*6,150	*6,150	*4,500	3,700	*3,800	2,450	*2,000	1,950	6.9
1.5	kg			*8,450	6,050	*5,350	3,450	3,900	2,350	*2,550	1,850	7.0
0	kg			*7,200	5,750	5,800	3,250	3,800	2,250	*2,400	1,850	6.9
-1.5	kg	*5,150	*5,150	*8,600	5,700	5,700	3,200	3,750	*2,200	*2,800	2,050	6.4
-3	kg	*9,150	*9,150	*7,150	*5,800	*4,900	*3,250		*3,750	*2,550	5.4	

Lifting capacity at the arm end without bucket.
For lifting capacity including bucket, weight of the bucket or the bucket with quick coupler must be deducted from the lifting capacities.
Lifting capacities are based on the machine standing on a firm, uniform supporting surface.



Rating over-front (Cf)



Rating over-side (Cs)

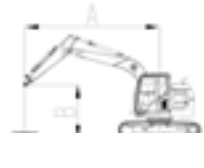
- Do not attempt to lift or hold any load that is greater than these rated values at their specified load radius and height. Weight of all accessories must be deducted from the above lifting capacities.
- The rated loads are in compliance with ISO 10567 Hydraulic Excavator Lift Capacity Rating Standard. They do not exceed 87% of hydraulic lifting capacity or 75% tipping load.
- Ratings at bucket lift hook.
- Lifting capacities are based on machine standing on level, firm and uniform ground.
- *Indicates the load is limited by hydraulic capacity rather than tipping capacity.
- Operator should be fully acquainted with the Operator's and Maintenance Instructions before operating this machine and rules for the safe operation of equipment should be adhered to at all times.

LIFTING CAPACITY (METRIC)

915FCR with 500 mm Shoes, MONO Boom, 2,900 mm Arm

Conditions

Boom length: 4,800 mm
Arm length: 2,900 mm
Shoes: 500 mm triple grouser shoes
Bucket: None
Counterweight: 3,500 kg
Blade: None



A: Load radius
B: Load point height
C: Lifting capacity rating
Cf: Rating loads over front
Cs: Rating loads over side or 360°

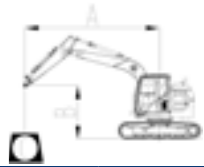
B/A (m)	1.5		3.0		4.5		6		MAX REACH		A (m)	
	Cf	Cs	Cf	Cs	Cf	Cs	Cf	Cs	Cf	Cs		
6	kg				*3,200	*3,200			*1,700	*1,700	5.9	
4.5	kg				*3,450	*3,450	*3,350	2,550	*1,650	*1,650	6.8	
3	kg			*5,400	*5,400	*4,150	3,800	*3,600	2,450	*1,600	*1,600	7.3
1.5	kg			*7,900	6,250	*5,100	3,500	3,950	2,350	*2,000	1,750	7.4
0	kg			*7,800	5,800	*5,750	3,300	3,800	2,250	*1,950	1,700	7.3
-1.5	kg	*4,700	*4,700	*8,850	5,650	5,700	3,200	3,750	*2,200	*2,400	1,900	6.8
-3	kg	*7,900	*7,900	*7,650	5,750	*5,250	3,200		*3,250	2,250	5.9	
-4.5	kg			*5,050	*5,050				*3,100	*3,100	4.4	

LIFTING CAPACITY (METRIC)

915FCR with 600 mm Shoes, MONO Boom, 2,900 mm Arm

Conditions

Boom length: 4,800 mm
Arm length: 2,900 mm
Shoes: 600 mm triple grouser shoes
Bucket: None
Counterweight: 3,500 kg
Blade: None



A: Load radius
B: Load point height
C: Lifting capacity rating
Cf: Rating loads over front
Cs: Rating loads over side or 360°

B/A (m)	1.5		3.0		4.5		6		MAX REACH		A (m)	
	Cf	Cs	Cf	Cs	Cf	Cs	Cf	Cs	Cf	Cs		
6	kg				*3,200	*3,200			*1,700	*1,700	5.9	
4.5	kg				*3,450	*3,450	*3,350	2,600	*1,650	*1,650	6.8	
3	kg			*5,400	*5,400	*4,150	3,850	*3,600	2,500	*1,600	*1,600	7.3
1.5	kg			*7,900	6,350	*5,100	3,600	4,000	2,400	*2,000	1,750	7.4
0	kg			*7,800	5,900	*5,750	3,350	3,900	2,300	*1,950	1,750	7.3
-1.5	kg	*4,700	*4,700	*8,850	5,800	5,800	3,250	3,800	*2,250	*2,400	1,900	6.8
-3	kg	*7,900	*7,900	*7,650	5,850	*5,250	3,250		*3,250	2,300	5.9	
-4.5	kg			*5,050	*5,050				*3,100	*3,100	4.4	



Lifting capacity at the arm end without bucket.
For lifting capacity including bucket, weight of the bucket or the bucket with quick coupler must be deducted from the lifting capacities.
Lifting capacities are based on the machine standing on a firm, uniform supporting surface.



Rating over-front (Cf)



Rating over-side (Cs)

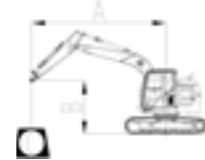
- Do not attempt to lift or hold any load that is greater than these rated values at their specified load radius and height. Weight of all accessories must be deducted from the above lifting capacities.
- The rated loads are in compliance with ISO 10567 Hydraulic Excavator Lift Capacity Rating Standard. They do not exceed 87% of hydraulic lifting capacity or 75% tipping load.
- Ratings at bucket lift hook.
- Lifting capacities are based on machine standing on level, firm and uniform ground.
- *Indicates the load is limited by hydraulic capacity rather than tipping capacity.
- Operator should be fully acquainted with the Operator's and Maintenance Instructions before operating this machine and rules for the safe operation of equipment should be adhered to at all times.

LIFTING CAPACITY (METRIC)

915FCR with 700 mm Shoes, MONO Boom, 2,900 mm Arm

Conditions

Boom length: 4,800 mm
Arm length: 2,900 mm
Shoes: 700 mm triple grouser shoes
Bucket: None
Counterweight: 3,500 kg
Blade: None



A: Load radius
B: Load point height
C: Lifting capacity rating
Cf: Rating loads over front
Cs: Rating loads over side or 360°

B/A (m)	1.5		3.0		4.5		6		MAX REACH		A (m)	
	Cf	Cs	Cf	Cs	Cf	Cs	Cf	Cs	Cf	Cs		
6	kg				*3,200	*3,200			*1,700	*1,700	5.9	
4.5	kg				*3,450	*3,450	*3,350	2,650	*1,650	*1,650	6.8	
3	kg			*5,400	*5,400	*4,150	3,900	*3,600	2,550	*1,600	*1,600	7.3
1.5	kg			*7,900	6,450	*5,100	3,650	*4,000	2,450	*2,000	1,800	7.4
0	kg			*7,800	6,000	*5,750	3,400	3,950	2,350	*1,950	1,800	7.3
-1.5	kg	*4,700	*4,700	*8,850	5,900	*5,850	3,300	3,900	*2,300	*2,400	1,950	6.8
-3	kg	*7,900	*7,900	*7,650	5,950	*5,250	3,300			*3,250	2,350	5.9
-4.5	kg			*5,050	*5,050					*3,100	*3,100	4.4

LIFTING CAPACITY (METRIC)

915FCR with 500 mm Shoes, MONO Boom, 2,900 mm Arm

Conditions

Boom length: 4,800 mm
Arm length: 2,900 mm
Shoes: 500 mm rubber track shoes
Bucket: None
Counterweight: 3,500 kg
Blade: None



A: Load radius
B: Load point height
C: Lifting capacity rating
Cf: Rating loads over front
Cs: Rating loads over side or 360°

B/A (m)	1.5		3.0		4.5		6		MAX REACH		A (m)	
	Cf	Cs	Cf	Cs	Cf	Cs	Cf	Cs	Cf	Cs		
6	kg				*3,200	*3,200			*1,700	*1,700	5.9	
4.5	kg				*3,450	*3,450	*3,350	2,550	*1,650	*1,650	6.8	
3	kg			*5,400	*5,400	*4,150	3,800	*3,600	2,450	*1,600	*1,600	7.3
1.5	kg			*7,900	6,250	*5,100	3,500	3,900	2,350	*2,000	1,700	7.4
0	kg			*7,800	5,750	*5,750	3,300	3,800	2,250	*1,950	1,700	7.3
-1.5	kg	*4,700	*4,700	*8,850	5,650	5,700	3,200	3,750	*2,200	*2,400	1,850	6.8
-3	kg	*7,900	*7,900	*7,650	5,700	*5,250	3,200			*3,250	2,250	5.9
-4.5	kg			*5,050	*5,050					*3,100	*3,100	4.4

Lifting capacity at the arm end without bucket.
For lifting capacity including bucket, weight of the bucket or the bucket with quick coupler must be deducted from the lifting capacities.
Lifting capacities are based on the machine standing on a firm, uniform supporting surface.



Rating over-front (Cf)



Rating over-side (Cs)

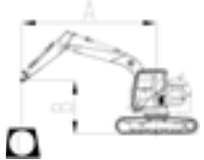
- Do not attempt to lift or hold any load that is greater than these rated values at their specified load radius and height. Weight of all accessories must be deducted from the above lifting capacities.
- The rated loads are in compliance with ISO 10567 Hydraulic Excavator Lift Capacity Rating Standard. They do not exceed 87% of hydraulic lifting capacity or 75% tipping load.
- Ratings at bucket lift hook.
- Lifting capacities are based on machine standing on level, firm and uniform ground.
- *Indicates the load is limited by hydraulic capacity rather than tipping capacity.
- Operator should be fully acquainted with the Operator's and Maintenance Instructions before operating this machine and rules for the safe operation of equipment should be adhered to at all times.

LIFTING CAPACITY (METRIC)

915FCR with 500 mm Shoes, MONO Boom, 2,500 mm Arm

Conditions

Boom length: 4,800 mm
Arm length: 2,500 mm
Shoes: 500 mm triple grouser shoes
Bucket: None
Counterweight: 3,500 kg
Blade: YES



A: Load radius
B: Load point height
C: Lifting capacity rating
Cf: Rating loads over front
Cs: Rating loads over side or 360°

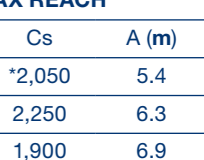
B/A (m)	1.5		3.0		4.5		6		MAX REACH		A (m)	
	Cf	Cs	Cf	Cs	Cf	Cs	Cf	Cs	Cf	Cs		
6	kg				*3,600	*3,600			*2,050	*2,050	5.4	
4.5	kg				*3,800	*3,800	*3,350	2,450	*2,350	2,250	6.3	
3	kg			*6,150	*6,150	*4,500	3,650	*3,800	2,400	*2,000	1,900	6.9
1.5	kg			*8,450	6,000	*5,350	3,400	*4,150	2,300	*2,550	1,850	7.0
0	kg			*7,200	5,650	*5,850	3,200	*4,350	2,200	*2,400	1,850	6.9
-1.5	kg	*5,150	*5,150	*8,600	5,600	*5,800	3,150	*4,200	*2,150	*2,800	2,000	6.4
-3	kg	*9,150	*9,150	*7,150	*5,700	*4,900	3,200			*3,750	*2,550	5.4

LIFTING CAPACITY (METRIC)

915FCR with 500 mm Shoes, MONO Boom, 2,500 mm Arm

Conditions

Boom length: 4,800 mm
Arm length: 2,500 mm
Shoes: 500 mm rubber track shoes
Bucket: None
Counterweight: 3,500 kg
Blade: YES



A: Load radius
B: Load point height
C: Lifting capacity rating
Cf: Rating loads over front
Cs: Rating loads over side or 360°

B/A (m)	1.5		3.0		4.5		6		MAX REACH		A (m)	
	Cf	Cs	Cf	Cs	Cf	Cs	Cf	Cs	Cf	Cs		
6	kg				*3,600	*3,600			*2,050	*2,050	5.4	
4.5	kg				*3,800	*3,800	*3,350	2,450	*2,350	2,250	6.3	
3	kg			*6,150	*6,150	*4,500	3,650	*3,800	2,400	*2,000	1,900	6.9
1.5	kg			*8,450	6,000	*5,350	3,400	3,950	2,300	*2,550	1,850	7.0
0	kg			*7,200	5,650	5,850	3,200	3,850	2,200	*2,400	1,850	6.9
-1.5	kg	*5,150	*5,150	*8,600	5,600	5,750	3,150	3,800	*2,150	*2,800	2,000	6.4
-3	kg	*9,150	*9,150	*7,150	*5,700	*4,900	3,200			*3,750	*2,550	5.4



Lifting capacity at the arm end without bucket.
For lifting capacity including bucket, weight of the bucket or the bucket with quick coupler must be deducted from the lifting capacities.
Lifting capacities are based on the machine standing on a firm, uniform supporting surface.



Rating over-front (Cf)



Rating over-side (Cs)

- Do not attempt to lift or hold any load that is greater than these rated values at their specified load radius and height. Weight of all accessories must be deducted from the above lifting capacities.
- The rated loads are in compliance with ISO 10567 Hydraulic Excavator Lift Capacity Rating Standard. They do not exceed 87% of hydraulic lifting capacity or 75% tipping load.
- Ratings at bucket lift hook.
- Lifting capacities are based on machine standing on level, firm and uniform ground.
- *Indicates the load is limited by hydraulic capacity rather than tipping capacity.
- Operator should be fully acquainted with the Operator's and Maintenance Instructions before operating this machine and rules for the safe operation of equipment should be adhered to at all times.

Lifting capacity at the arm end without bucket.
For lifting capacity including bucket, weight of the bucket or the bucket with quick coupler must be deducted from the lifting capacities.
Lifting capacities are based on the machine standing on a firm, uniform supporting surface.



Rating over-front (Cf)



Rating over-side (Cs)

- Do not attempt to lift or hold any load that is greater than these rated values at their specified load radius and height. Weight of all accessories must be deducted from the above lifting capacities.
- The rated loads are in compliance with ISO 10567 Hydraulic Excavator Lift Capacity Rating Standard. They do not exceed 87% of hydraulic lifting capacity or 75% tipping load.
- Ratings at bucket lift hook.
- Lifting capacities are based on machine standing on level, firm and uniform ground.
- *Indicates the load is limited by hydraulic capacity rather than tipping capacity.
- Operator should be fully acquainted with the Operator's and Maintenance Instructions before operating this machine and rules for the safe operation of equipment should be adhered to at all times.

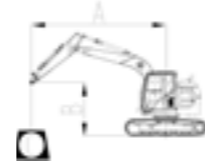
LIFTING CAPACITY (METRIC)

915FCR with 600 mm Shoes, MONO Boom, 2,500 mm Arm

Conditions

- A: Load radius
- B: Load point height
- C: Lifting capacity rating
- Cf: Rating loads over front
- Cs: Rating loads over side or 360°

- Boom length: 4,800 mm
- Arm length: 2,500 mm
- Shoes: 600 mm triple grouser shoes
- Bucket: None
- Counterweight: 3,500 kg
- Blade: YES



Blade Down

B/A (m)		1.5		3.0		4.5		6		MAX REACH		A (m)
		Cf	Cs	Cf	Cs	Cf	Cs	Cf	Cs	Cf	Cs	
6	kg					*3,600	*3,600			*2,050	*2,050	5.4
4.5	kg					*3,800	*3,800	*3,350	2,500	*2,350	2,300	6.3
3	kg			*6,150	*6,150	*4,500	3,750	*3,800	2,450	*2,000	1,950	6.9
1.5	kg			*8,450	6,100	*5,350	3,450	*4,150	2,350	*2,550	1,850	7.0
0	kg			*7,200	5,750	*5,850	3,300	*4,350	2,250	*2,400	1,850	6.9
-1.5	kg	*5,150	*5,150	*8,600	5,700	*5,800	3,200	*4,200	*2,200	*2,800	2,050	6.4
-3	kg	*9,150	*9,150	*7,150	*5,800	*4,900	3,250			*3,750	*2,600	5.4

Blade Up

B/A (m)		1.5		3.0		4.5		6		MAX REACH		A (m)
		Cf	Cs	Cf	Cs	Cf	Cs	Cf	Cs	Cf	Cs	
6	kg					*3,600	*3,600			*2,050	*2,050	5.4
4.5	kg					*3,800	*3,800	*3,350	2,500	*2,350	2,300	6.3
3	kg			*6,150	*6,150	*4,500	3,750	*3,800	2,450	*2,000	1,950	6.9
1.5	kg			*8,450	6,100	*5,350	3,450	4,000	2,350	*2,550	1,850	7.0
0	kg			*7,200	5,750	*5,850	3,300	3,900	2,250	*2,400	1,850	6.9
-1.5	kg	*5,150	*5,150	*8,600	5,700	*5,800	3,200	3,850	*2,200	*2,800	2,050	6.4
-3	kg	*9,150	*9,150	*7,150	*5,800	*4,900	3,250			*3,750	*2,600	5.4

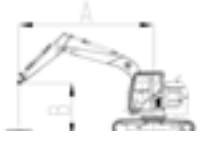
LIFTING CAPACITY (METRIC)

915FCR with 700 mm Shoes, MONO Boom, 2,500 mm Arm

Conditions

- A: Load radius
- B: Load point height
- C: Lifting capacity rating
- Cf: Rating loads over front
- Cs: Rating loads over side or 360°

- Boom length: 4,800 mm
- Arm length: 2,500 mm
- Shoes: 700 mm triple grouser shoes
- Bucket: None
- Counterweight: 3,500 kg
- Blade: YES



Blade Down

B/A (m)		1.5		3.0		4.5		6		MAX REACH		A (m)
		Cf	Cs	Cf	Cs	Cf	Cs	Cf	Cs	Cf	Cs	
6	kg					*3,600	*3,600			*2,050	*2,050	5.4
4.5	kg					*3,800	*3,800	*3,350	2,550	*2,350	2,350	6.3
3	kg			*6,150	*6,150	*4,500	3,800	*3,800	2,500	*2,000	*2,000	6.9
1.5	kg			*8,450	6,200	*5,350	3,500	*4,150	2,350	*2,550	1,900	7.0
0	kg			*7,200	5,850	*5,850	3,350	*4,350	2,300	*2,400	1,900	6.9
-1.5	kg	*5,150	*5,150	*8,600	5,800	*5,800	3,250	*4,200	*2,250	*2,800	2,100	6.4
-3	kg	*9,150	*9,150	*7,150	*5,900	*4,900	3,300			*3,750	*2,600	5.4

Blade Up

B/A (m)		1.5		3.0		4.5		6		MAX REACH		A (m)
		Cf	Cs	Cf	Cs	Cf	Cs	Cf	Cs	Cf	Cs	
6	kg					*3,600	*3,600			*2,050	*2,050	5.4
4.5	kg					*3,800	*3,800	*3,350	2,550	*2,350	2,350	6.3
3	kg			*6,150	*6,150	*4,500	3,800	*3,800	2,500	*2,000	*2,000	6.9
1.5	kg			*8,450	6,200	*5,350	3,500	4,050	2,350	*2,550	1,900	7.0
0	kg			*7,200	5,850	*5,850	3,350	3,950	2,300	*2,400	1,900	6.9
-1.5	kg	*5,150	*5,150	*8,600	5,800	*5,800	3,250	3,950	*2,250	*2,800	2,100	6.4
-3	kg	*9,150	*9,150	*7,150	*5,900	*4,900	3,300			*3,750	*2,600	5.4



Lifting capacity at the arm end without bucket.
For lifting capacity including bucket, weight of the bucket or the bucket with quick coupler must be deducted from the lifting capacities.
Lifting capacities are based on the machine standing on a firm, uniform supporting surface.



Rating over-front (Cf)



Rating over-side (Cs)

- Do not attempt to lift or hold any load that is greater than these rated values at their specified load radius and height. Weight of all accessories must be deducted from the above lifting capacities.
- The rated loads are in compliance with ISO 10567 Hydraulic Excavator Lift Capacity Rating Standard. They do not exceed 87% of hydraulic lifting capacity or 75% tipping load.
- Ratings at bucket lift hook.
- Lifting capacities are based on machine standing on level, firm and uniform ground.
- *Indicates the load is limited by hydraulic capacity rather than tipping capacity.
- Operator should be fully acquainted with the Operator's and Maintenance Instructions before operating this machine and rules for the safe operation of equipment should be adhered to at all times.

Lifting capacity at the arm end without bucket.
For lifting capacity including bucket, weight of the bucket or the bucket with quick coupler must be deducted from the lifting capacities.
Lifting capacities are based on the machine standing on a firm, uniform supporting surface.



Rating over-front (Cf)



Rating over-side (Cs)

- Do not attempt to lift or hold any load that is greater than these rated values at their specified load radius and height. Weight of all accessories must be deducted from the above lifting capacities.
- The rated loads are in compliance with ISO 10567 Hydraulic Excavator Lift Capacity Rating Standard. They do not exceed 87% of hydraulic lifting capacity or 75% tipping load.
- Ratings at bucket lift hook.
- Lifting capacities are based on machine standing on level, firm and uniform ground.
- *Indicates the load is limited by hydraulic capacity rather than tipping capacity.
- Operator should be fully acquainted with the Operator's and Maintenance Instructions before operating this machine and rules for the safe operation of equipment should be adhered to at all times.

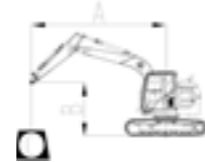
LIFTING CAPACITY (METRIC)

915FCR with 500 mm Shoes, MONO Boom, 2,500 mm Arm

Conditions

- A: Load radius
- B: Load point height
- C: Lifting capacity rating
- Cf: Rating loads over front
- Cs: Rating loads over side or 360°

- Boom length: 4,800 mm
- Arm length: 2,500 mm
- Shoes: 500 mm rubber track shoes
- Bucket: None
- Counterweight: 3,500 kg
- Blade: YES



Blade Down

B/A (m)		1.5		3.0		4.5		6		MAX REACH		A (m)
		Cf	Cs	Cf	Cs	Cf	Cs	Cf	Cs	Cf	Cs	
6	kg					*3,600	*3,600			*2,050	*2,050	5.4
4.5	kg					*3,800	*3,800	*3,350	2,450	*2,350	2,250	6.3
3	kg			*6,150	*6,150	*4,500	3,650	*3,800	2,400	*2,000	1,900	6.9
1.5	kg			*8,450	5,950	*5,350	3,400	*4,150	2,300	*2,550	1,850	7.0
0	kg			*7,200	5,600	*5,850	3,200	*4,350	2,200	*2,400	1,800	6.9
-1.5	kg	*5,150	*5,150	*8,600	5,550	*5,800	3,150	*4,200	*2,150	*2,800	2,000	6.4
-3	kg	*9,150	*9,150	*7,150	*5,650	*4,900	3,150			*3,750	*2,500	5.4

Blade Up

B/A (m)		1.5		3.0		4.5		6		MAX REACH		A (m)
		Cf	Cs	Cf	Cs	Cf	Cs	Cf	Cs	Cf	Cs	
6	kg					*3,600	*3,600			*2,050	*2,050	5.4
4.5	kg					*3,800	*3,800	*3,350	2,450	*2,350	2,250	6.3
3	kg			*6,150	*6,150	*4,500	3,650	*3,800	2,400	*2,000	1,900	6.9
1.5	kg			*8,450	5,950	*5,350	3,400	3,950	2,300	*2,550	1,850	7.0
0	kg			*7,200	5,600	5,850	3,200	3,850	2,200	*2,400	1,800	6.9
-1.5	kg	*5,150	*5,150	*8,600	5,550	5,750	3,150	3,800	*2,150	*2,800	2,000	6.4
-3	kg	*9,150	*9,150	*7,150	*5,650	*4,900	3,150			*3,750	*2,500	5.4

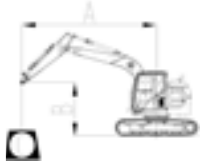
LIFTING CAPACITY (METRIC)

915FCR with 500 mm Shoes, MONO Boom, 2,900 mm Arm

Conditions

- A: Load radius
- B: Load point height
- C: Lifting capacity rating
- Cf: Rating loads over front
- Cs: Rating loads over side or 360°

- Boom length: 4,800 mm
- Arm length: 2,900 mm
- Shoes: 500 mm triple grouser shoes
- Bucket: None
- Counterweight: 3,500 kg
- Blade: YES



Blade Down

B/A (m)		1.5		3.0		4.5		6		MAX REACH		A (m)
		Cf	Cs	Cf	Cs	Cf	Cs	Cf	Cs	Cf	Cs	
6	kg					*3,200	*3,200			*1,700	*1,700	5.9
4.5	kg					*3,450	*3,450	*3,350	2,500	*1,650	*1,650	6.8
3	kg			*5,400	*5,400	*4,150	3,750	*3,600	2,450	*1,600	*1,600	7.3
1.5	kg			*7,900	6,150	*5,100	3,450	*4,000	2,300	*2,000	1,700	7.4
0	kg			*7,800	5,650	*5,750	3,250	*4,300	2,200	*1,950	1,700	7.3
-1.5	kg	*4,700	*4,700	*8,850	5,550	*5,850	3,150	*4,250	*2,150	*2,400	1,850	6.8
-3	kg	*7,900	*7,900	*7,650	5,600	*5,250	3,150			*3,250	2,250	5.9
-4.5	kg			*5,050	*5,050					*3,100	*3,100	4.4

Blade Up

B/A (m)		1.5		3.0		4.5		6		MAX REACH		A (m)
		Cf	Cs	Cf	Cs	Cf	Cs	Cf	Cs	Cf	Cs	
6	kg					*3,200	*3,200			*1,700	*1,700	5.9
4.5	kg					*3,450	*3,450	*3,350	2,500	*1,650	*1,650	6.8
3	kg			*5,400	*5,400	*4,150	3,750	*3,600	2,450	*1,600	*1,600	7.3
1.5	kg			*7,900	6,150	*5,100	3,450	3,950	2,300	*2,000	1,700	7.4
0	kg			*7,800	5,650	*5,750	3,250	3,850	2,200	*1,950	1,700	7.3
-1.5	kg	*4,700	*4,700	*8,850	5,550	5,750	3,150	3,800	*2,150	*2,400	1,850	6.8
-3	kg	*7,900	*7,900	*7,650	5,600	*5,250	3,150			*3,250	2,250	5.9
-4.5	kg			*5,050	*5,050					*3,100	*3,100	4.4



Lifting capacity at the arm end without bucket.
For lifting capacity including bucket, weight of the bucket or the bucket with quick coupler must be deducted from the lifting capacities.
Lifting capacities are based on the machine standing on a firm, uniform supporting surface.



Rating over-front (Cf)



Rating over-side (Cs)

- Do not attempt to lift or hold any load that is greater than these rated values at their specified load radius and height. Weight of all accessories must be deducted from the above lifting capacities.
- The rated loads are in compliance with ISO 10567 Hydraulic Excavator Lift Capacity Rating Standard. They do not exceed 87% of hydraulic lifting capacity or 75% tipping load.
- Ratings at bucket lift hook.
- Lifting capacities are based on machine standing on level, firm and uniform ground.
- *Indicates the load is limited by hydraulic capacity rather than tipping capacity.
- Operator should be fully acquainted with the Operator's and Maintenance Instructions before operating this machine and rules for the safe operation of equipment should be adhered to at all times.

Lifting capacity at the arm end without bucket.
For lifting capacity including bucket, weight of the bucket or the bucket with quick coupler must be deducted from the lifting capacities.
Lifting capacities are based on the machine standing on a firm, uniform supporting surface.



Rating over-front (Cf)



Rating over-side (Cs)

- Do not attempt to lift or hold any load that is greater than these rated values at their specified load radius and height. Weight of all accessories must be deducted from the above lifting capacities.
- The rated loads are in compliance with ISO 10567 Hydraulic Excavator Lift Capacity Rating Standard. They do not exceed 87% of hydraulic lifting capacity or 75% tipping load.
- Ratings at bucket lift hook.
- Lifting capacities are based on machine standing on level, firm and uniform ground.
- *Indicates the load is limited by hydraulic capacity rather than tipping capacity.
- Operator should be fully acquainted with the Operator's and Maintenance Instructions before operating this machine and rules for the safe operation of equipment should be adhered to at all times.

LIFTING CAPACITY (METRIC)

915FCR with 600 mm Shoes, MONO Boom, 2,900 mm Arm

Conditions

- A: Load radius
- B: Load point height
- C: Lifting capacity rating
- Cf: Rating loads over front
- Cs: Rating loads over side or 360°

Boom length: 4,800 mm
Arm length: 2,900 mm
Shoes: 600 mm triple grouser shoes
Bucket: None
Counterweight: 3,500 kg
Blade: YES



Blade Down												
B/A (m)	1.5		3.0		4.5		6		MAX REACH		A (m)	
	Cf	Cs	Cf	Cs	Cf	Cs	Cf	Cs	Cf	Cs		
6	kg				*3,200	*3,200			*1,700	*1,700	5.9	
4.5	kg				*3,450	*3,450	*3,350	2,550	*1,650	*1,650	6.8	
3	kg			*5,400	*5,400	*4,150	3,800	*3,600	2,450	*1,600	*1,600	7.3
1.5	kg			*7,900	6,250	*5,100	3,500	*4,000	2,350	*2,000	1,700	7.4
0	kg			*7,800	5,750	*5,750	3,300	*4,300	2,250	*1,950	1,700	7.3
-1.5	kg	*4,700	*4,700	*8,850	5,650	*5,850	3,200	*4,250	*2,200	*2,400	1,850	6.8
-3		*7,900	*7,900	*7,650	5,700	*5,250	3,200			*3,250	2,250	5.9
-4.5	kg			*5,050	*5,050					*3,100	*3,100	4.4

Blade Up												
B/A (m)	1.5		3.0		4.5		6		MAX REACH		A (m)	
	Cf	Cs	Cf	Cs	Cf	Cs	Cf	Cs	Cf	Cs		
6	kg				*3,200	*3,200			*1,700	*1,700	5.9	
4.5	kg				*3,450	*3,450	*3,350	2,550	*1,650	*1,650	6.8	
3	kg			*5,400	*5,400	*4,150	3,800	*3,600	2,450	*1,600	*1,600	7.3
1.5	kg			*7,900	6,250	*5,100	3,500	*4,000	2,350	*2,000	1,700	7.4
0	kg			*7,800	5,750	*5,750	3,300	3,900	2,250	*1,950	1,700	7.3
-1.5	kg	*4,700	*4,700	*8,850	5,650	5,850	3,200	3,850	*2,200	*2,400	1,850	6.8
-3		*7,900	*7,900	*7,650	5,700	*5,250	3,200			*3,250	2,250	5.9
-4.5	kg			*5,050	*5,050					*3,100	*3,100	4.4

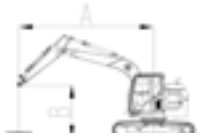
LIFTING CAPACITY (METRIC)

915FCR with 700 mm Shoes, MONO Boom, 2,900 mm Arm

Conditions

- A: Load radius
- B: Load point height
- C: Lifting capacity rating
- Cf: Rating loads over front
- Cs: Rating loads over side or 360°

Boom length: 4,800 mm
Arm length: 2,900 mm
Shoes: 700 mm triple grouser shoes
Bucket: None
Counterweight: 3,500 kg
Blade: YES



Blade Down												
B/A (m)	1.5		3.0		4.5		6		MAX REACH		A (m)	
	Cf	Cs	Cf	Cs	Cf	Cs	Cf	Cs	Cf	Cs		
6	kg				*3,200	*3,200			*1,700	*1,700	5.9	
4.5	kg				*3,450	*3,450	*3,350	2,600	*1,650	*1,650	6.8	
3	kg			*5,400	*5,400	*4,150	3,850	*3,600	2,500	*1,600	*1,600	7.3
1.5	kg			*7,900	6,350	*5,100	3,550	*4,000	2,400	*2,000	1,750	7.4
0	kg			*7,800	5,850	*5,750	3,350	*4,300	2,300	*1,950	1,750	7.3
-1.5	kg	*4,700	*4,700	*8,850	5,750	*5,850	3,250	*4,250	*2,250	*2,400	1,900	6.8
-3		*7,900	*7,900	*7,650	5,800	*5,250	3,250			*3,250	2,300	5.9
-4.5	kg			*5,050	*5,050					*3,100	*3,100	4.4

Blade Up												
B/A (m)	1.5		3.0		4.5		6		MAX REACH		A (m)	
	Cf	Cs	Cf	Cs	Cf	Cs	Cf	Cs	Cf	Cs		
6	kg				*3,200	*3,200			*1,700	*1,700	5.9	
4.5	kg				*3,450	*3,450	*3,350	2,600	*1,650	*1,650	6.8	
3	kg			*5,400	*5,400	*4,150	3,850	*3,600	2,500	*1,600	*1,600	7.3
1.5	kg			*7,900	6,350	*5,100	3,550	*4,000	2,400	*2,000	1,750	7.4
0	kg			*7,800	5,850	*5,750	3,350	3,950	2,300	*1,950	1,750	7.3
-1.5	kg	*4,700	*4,700	*8,850	5,750	*5,850	3,250	3,900	*2,250	*2,400	1,900	6.8
-3		*7,900	*7,900	*7,650	5,800	*5,250	3,250			*3,250	2,300	5.9
-4.5	kg			*5,050	*5,050					*3,100	*3,100	4.4



Lifting capacity at the arm end without bucket.
For lifting capacity including bucket, weight of the bucket or the bucket with quick coupler must be deducted from the lifting capacities.
Lifting capacities are based on the machine standing on a firm, uniform supporting surface.



Rating over-front (Cf)



Rating over-side (Cs)

- Do not attempt to lift or hold any load that is greater than these rated values at their specified load radius and height. Weight of all accessories must be deducted from the above lifting capacities.
- The rated loads are in compliance with ISO 10567 Hydraulic Excavator Lift Capacity Rating Standard. They do not exceed 87% of hydraulic lifting capacity or 75% tipping load.
- Ratings at bucket lift hook.
- Lifting capacities are based on machine standing on level, firm and uniform ground.
- *Indicates the load is limited by hydraulic capacity rather than tipping capacity.
- Operator should be fully acquainted with the Operator's and Maintenance Instructions before operating this machine and rules for the safe operation of equipment should be adhered to at all times.



LIFTING CAPACITY (METRIC)

915FCR with 500 mm Shoes, MONO Boom, 2,900 mm Arm **Conditions**

A: Load radius
B: Load point height
C: Lifting capacity rating
Cf: Rating loads over front
Cs: Rating loads over side or 360°

Boom length: 4,800 mm
Arm length: 2,900 mm
Shoes: 500 mm rubber track shoes
Bucket: None
Counterweight: 3,500 kg
Blade: YES

B/A (m)		Blade Down										A (m)
		1.5		3.0		4.5		6		MAX REACH		
	kg	Cf	Cs	Cf	Cs	Cf	Cs	Cf	Cs	Cf	Cs	
6	kg					*3,200	*3,200			*1,700	*1,700	5.9
4.5	kg					*3,450	*3,450	*3,350	2,500	*1,650	*1,650	6.8
3	kg			*5,400	*5,400	*4,150	3,700	*3,600	2,400	*1,600	*1,600	7.3
1.5	kg			*7,900	6,100	*5,100	3,450	*4,000	2,300	*2,000	1,700	7.4
0	kg			*7,800	5,650	*5,750	3,200	*4,300	2,200	*1,950	1,700	7.3
-1.5	kg	*4,700	*4,700	*8,850	5,550	*5,850	3,100	*4,250	*2,150	*2,400	1,850	6.8
-3	kg	*7,900	*7,900	*7,650	5,600	*5,250	3,100			*3,250	2,200	5.9
-4.5	kg			*5,050	*5,050					*3,100	*3,100	4.4

B/A (m)		Blade Up										A (m)
		1.5		3.0		4.5		6		MAX REACH		
	kg	Cf	Cs	Cf	Cs	Cf	Cs	Cf	Cs	Cf	Cs	
6	kg					*3,200	*3,200			*1,700	*1,700	5.9
4.5	kg					*3,450	*3,450	*3,350	2,500	*1,650	*1,650	6.8
3	kg			*5,400	*5,400	*4,150	3,700	*3,600	2,400	*1,600	*1,600	7.3
1.5	kg			*7,900	6,100	*5,100	3,450	3,950	2,300	*2,000	1,700	7.4
0	kg			*7,800	5,650	*5,750	3,200	3,850	2,200	*1,950	1,700	7.3
-1.5	kg	*4,700	*4,700	*8,850	5,550	5,750	3,100	3,750	*2,150	*2,400	1,850	6.8
-3	kg	*7,900	*7,900	*7,650	5,600	*5,250	3,100			*3,250	2,200	5.9
-4.5	kg			*5,050	*5,050					*3,100	*3,100	4.4

Lifting capacity at the arm end without bucket.
For lifting capacity including bucket, weight of the bucket or the bucket with quick coupler must be deducted from the lifting capacities.
Lifting capacities are based on the machine standing on a firm, uniform supporting surface.



Rating over-front (Cf)



Rating over-side (Cs)

- Do not attempt to lift or hold any load that is greater than these rated values at their specified load radius and height. Weight of all accessories must be deducted from the above lifting capacities.
- The rated loads are in compliance with ISO 10567 Hydraulic Excavator Lift Capacity Rating Standard. They do not exceed 87% of hydraulic lifting capacity or 75% tipping load.
- Ratings at bucket lift hook.
- Lifting capacities are based on machine standing on level, firm and uniform ground.
- *Indicates the load is limited by hydraulic capacity rather than tipping capacity.
- Operator should be fully acquainted with the Operator's and Maintenance Instructions before operating this machine and rules for the safe operation of equipment should be adhered to at all times.



LIFTING CAPACITY (METRIC)

915FCR with 500 mm Shoes, TWO-PIECE Boom, 2,500 mm Arm **Conditions**

A: Load radius
B: Load point height
C: Lifting capacity rating
Cf: Rating loads over front
Cs: Rating loads over side or 360°

Boom length: 5,050 mm
Arm length: 2,500 mm
Shoes: 500 mm triple grouser shoes
Bucket: None
Counterweight: 3,500 kg
Blade: None

B/A (m)		Blade Down										A (m)		
		1.5		3.0		4.5		6		MAX REACH				
	kg	Cf	Cs	Cf	Cs	Cf	Cs	Cf	Cs	Cf	Cs			
6	kg							*3,650	*3,650			*2,050	*2,050	5.8
4.5	kg					*4,200	*4,200	*3,900	*3,900	*3,500	2,450	*2,050	2,050	6.7
3	kg					*6,550	*6,550	*4,550	3,650	*3,750	2,400	*2,050	1,750	7.2
1.5	kg							*5,300	3,350	3,850	2,250	*2,600	1,700	7.3
0	kg					*5,000	*5,000	*5,650	3,150	3,750	2,150	*2,450	1,700	7.2
-1.5	kg					*7,900	5,450	*5,450	3,050	3,700	*2,100	*3,000	1,850	6.7
-3	kg					*6,400	*5,600	*4,600	3,100			*3,100	*2,300	5.8

LIFTING CAPACITY (METRIC)

915FCR with 600 mm Shoes, TWO-PIECE Boom, 2,500 mm Arm **Conditions**

A: Load radius
B: Load point height
C: Lifting capacity rating
Cf: Rating loads over front
Cs: Rating loads over side or 360°

Boom length: 5,050 mm
Arm length: 2,500 mm
Shoes: 600 mm triple grouser shoes
Bucket: None
Counterweight: 3,500 kg
Blade: None

B/A (m)		Blade Down										A (m)		
		1.5		3.0		4.5		6		MAX REACH				
	kg	Cf	Cs	Cf	Cs	Cf	Cs	Cf	Cs	Cf	Cs			
6	kg							*3,650	*3,650			*2,050	*2,050	5.8
4.5	kg					*4,200	*4,200	*3,900	*3,900	*3,500	2,500	*2,050	*2,050	6.7
3	kg					*6,550	*6,550	*4,550	3,700	*3,750	2,400	*2,050	1,800	7.2
1.5	kg							*5,300	3,400	3,900	2,300	*2,600	1,700	7.3
0	kg					*5,000	*5,000	*5,650	3,200	3,800	2,200	*2,450	1,700	7.2
-1.5	kg					*7,900	5,550	*5,450	3,100	3,750	*2,150	*3,000	1,900	6.7
-3	kg					*6,400	*5,700	*4,600	3,150			*3,100	*2,300	5.8



Lifting capacity at the arm end without bucket.
For lifting capacity including bucket, weight of the bucket or the bucket with quick coupler must be deducted from the lifting capacities.
Lifting capacities are based on the machine standing on a firm, uniform supporting surface.



Rating over-front (Cf)



Rating over-side (Cs)

- Do not attempt to lift or hold any load that is greater than these rated values at their specified load radius and height. Weight of all accessories must be deducted from the above lifting capacities.
- The rated loads are in compliance with ISO 10567 Hydraulic Excavator Lift Capacity Rating Standard. They do not exceed 87% of hydraulic lifting capacity or 75% tipping load.
- Ratings at bucket lift hook.
- Lifting capacities are based on machine standing on level, firm and uniform ground.
- *Indicates the load is limited by hydraulic capacity rather than tipping capacity.
- Operator should be fully acquainted with the Operator's and Maintenance Instructions before operating this machine and rules for the safe operation of equipment should be adhered to at all times.

LIFTING CAPACITY (METRIC)

915FCR with 700 mm Shoes, TWO-PIECE Boom, 2,500 mm Arm

Conditions
 Boom length: 5,050 mm
 Arm length: 2,500 mm
 Shoes: 700 mm triple grouser shoes
 Bucket: None
 Counterweight: 3,500 kg
 Blade: None



B/A (m)	1.5		3.0		4.5		6		MAX REACH		
	Cf	Cs	Cf	Cs	Cf	Cs	Cf	Cs	Cf	Cs	A (m)
6	kg				*3,650	*3,650			*2,050	*2,050	5.8
4.5	kg		*4,200	*4,200	*3,900	*3,900	*3,500	2,550	*2,050	*2,050	6.7
3	kg		*6,550	*6,550	*4,550	3,750	*3,750	2,450	*2,050	1,850	7.2
1.5	kg				*5,300	3,450	4,000	2,350	*2,600	1,750	7.3
0	kg		*5,000	*5,000	*5,650	3,250	3,850	2,250	*2,450	1,750	7.2
-1.5	kg		*7,900	5,700	*5,450	3,200	3,850	*2,200	*3,000	1,900	6.7
-3	kg		*6,400	*5,800	*4,600	3,250			*3,100	*2,350	5.8

LIFTING CAPACITY (METRIC)

915FCR with 500 mm Shoes, TWO-PIECE Boom, 2,500 mm Arm

Conditions
 Boom length: 5,050 mm
 Arm length: 2,500 mm
 Shoes: 500 mm rubber track shoes
 Bucket: None
 Counterweight: 3,500 kg
 Blade: None



B/A (m)	1.5		3.0		4.5		6		MAX REACH		
	Cf	Cs	Cf	Cs	Cf	Cs	Cf	Cs	Cf	Cs	A (m)
6	kg				*3,650	*3,650			*2,050	*2,050	5.8
4.5	kg		*4,200	*4,200	*3,900	*3,900	*3,500	2,450	*2,050	2,000	6.7
3	kg		*6,550	*6,550	*4,550	3,650	*3,750	2,350	*2,050	1,750	7.2
1.5	kg				*5,300	3,300	3,850	2,250	*2,600	1,700	7.3
0	kg		*5,000	*5,000	*5,650	3,100	3,750	2,150	*2,450	1,700	7.2
-1.5	kg		*7,900	5,450	*5,450	3,050	3,700	*2,100	*3,000	1,850	6.7
-3	kg		*6,400	*5,600	*4,600	3,100			*3,100	*2,250	5.8

Lifting capacity at the arm end without bucket.
For lifting capacity including bucket, weight of the bucket or the bucket with quick coupler must be deducted from the lifting capacities.
Lifting capacities are based on the machine standing on a firm, uniform supporting surface.



Rating over-front (Cf)



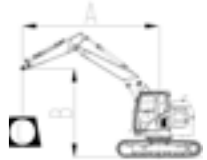
Rating over-side (Cs)

- Do not attempt to lift or hold any load that is greater than these rated values at their specified load radius and height. Weight of all accessories must be deducted from the above lifting capacities.
- The rated loads are in compliance with ISO 10567 Hydraulic Excavator Lift Capacity Rating Standard. They do not exceed 87% of hydraulic lifting capacity or 75% tipping load.
- Ratings at bucket lift hook.
- Lifting capacities are based on machine standing on level, firm and uniform ground.
- *Indicates the load is limited by hydraulic capacity rather than tipping capacity.
- Operator should be fully acquainted with the Operator's and Maintenance Instructions before operating this machine and rules for the safe operation of equipment should be adhered to at all times.

LIFTING CAPACITY (METRIC)

915FCR with 500 mm Shoes, TWO-PIECE Boom, 2,500 mm Arm

Conditions
 Boom length: 5,050 mm
 Arm length: 2,500 mm
 Shoes: 500 mm triple grouser shoes
 Bucket: None
 Counterweight: 3,500 kg
 Blade: YES



B/A (m)	1.5		3.0		4.5		6		MAX REACH		
	Cf	Cs	Cf	Cs	Cf	Cs	Cf	Cs	Cf	Cs	A (m)
6	kg				*3,650	*3,650			*2,050	*2,050	5.8
4.5	kg		*4,200	*4,200	*3,900	3,850	*3,500	2,450	*2,050	2,000	6.7
3	kg		*6,550	*6,550	*4,550	3,600	*3,750	2,350	*2,050	1,750	7.2
1.5	kg				*5,300	3,250	*4,000	2,200	*2,600	1,650	7.3
0	kg		*5,000	*5,000	*5,650	3,050	*4,200	2,100	*2,450	1,650	7.2
-1.5	kg		*7,900	5,350	*5,450	3,000	*4,000	*2,050	*3,000	1,800	6.7
-3	kg		*6,400	*5,500	*4,600	3,050			*3,100	*2,250	5.8

LIFTING CAPACITY (METRIC)

B/A (m)	1.5		3.0		4.5		6		MAX REACH		
	Cf	Cs	Cf	Cs	Cf	Cs	Cf	Cs	Cf	Cs	A (m)
6	kg				*3,650	*3,650			*2,050	*2,050	5.8
4.5	kg		*4,200	*4,200	*3,900	3,850	*3,500	2,450	*2,050	2,000	6.7
3	kg		*6,550	*6,550	*4,550	3,600	*3,750	2,350	*2,050	1,750	7.2
1.5	kg				*5,300	3,250	3,900	2,200	*2,600	1,650	7.3
0	kg		*5,000	*5,000	*5,650	3,050	3,750	2,100	*2,450	1,650	7.2
-1.5	kg		*7,900	5,350	*5,450	3,000	3,750	*2,050	*3,000	1,800	6.7
-3	kg		*6,400	*5,500	*4,600	3,050			*3,100	*2,250	5.8



Lifting capacity at the arm end without bucket.
For lifting capacity including bucket, weight of the bucket or the bucket with quick coupler must be deducted from the lifting capacities.
Lifting capacities are based on the machine standing on a firm, uniform supporting surface.



Rating over-front (Cf)



Rating over-side (Cs)

- Do not attempt to lift or hold any load that is greater than these rated values at their specified load radius and height. Weight of all accessories must be deducted from the above lifting capacities.
- The rated loads are in compliance with ISO 10567 Hydraulic Excavator Lift Capacity Rating Standard. They do not exceed 87% of hydraulic lifting capacity or 75% tipping load.
- Ratings at bucket lift hook.
- Lifting capacities are based on machine standing on level, firm and uniform ground.
- *Indicates the load is limited by hydraulic capacity rather than tipping capacity.
- Operator should be fully acquainted with the Operator's and Maintenance Instructions before operating this machine and rules for the safe operation of equipment should be adhered to at all times.

Lifting capacity at the arm end without bucket.
For lifting capacity including bucket, weight of the bucket or the bucket with quick coupler must be deducted from the lifting capacities.
Lifting capacities are based on the machine standing on a firm, uniform supporting surface.



Rating over-front (Cf)



Rating over-side (Cs)

- Do not attempt to lift or hold any load that is greater than these rated values at their specified load radius and height. Weight of all accessories must be deducted from the above lifting capacities.
- The rated loads are in compliance with ISO 10567 Hydraulic Excavator Lift Capacity Rating Standard. They do not exceed 87% of hydraulic lifting capacity or 75% tipping load.
- Ratings at bucket lift hook.
- Lifting capacities are based on machine standing on level, firm and uniform ground.
- *Indicates the load is limited by hydraulic capacity rather than tipping capacity.
- Operator should be fully acquainted with the Operator's and Maintenance Instructions before operating this machine and rules for the safe operation of equipment should be adhered to at all times.

LIFTING CAPACITY (METRIC)

915FCR with 600 mm Shoes, TWO-PIECE Boom, 2,500 mm Arm

Conditions

- A: Load radius
- B: Load point height
- C: Lifting capacity rating
- Cf: Rating loads over front
- Cs: Rating loads over side or 360°

- Boom length: 5,050 mm
- Arm length: 2,500 mm
- Shoes: 600 mm triple grouser shoes
- Bucket: None
- Counterweight: 3,500 kg
- Blade: YES



Blade Down

B/A (m)	1.5		3.0		4.5		6		MAX REACH		A (m)
	Cf	Cs	Cf	Cs	Cf	Cs	Cf	Cs	Cf	Cs	
6	kg				*3,650	*3,650			*2,050	*2,050	5.8
4.5	kg		*4,200	*4,200	*3,900	*3,900	*3,500	2,450	*2,050	2,050	6.7
3	kg		*6,550	*6,550	*4,550	3,650	*3,750	2,350	*2,050	1,750	7.2
1.5	kg				*5,300	3,350	*4,000	2,250	*2,600	1,700	7.3
0	kg		*5,000	*5,000	*5,650	3,100	*4,200	2,150	*2,450	1,700	7.2
-1.5	kg		*7,900	5,450	*5,450	3,050	*4,000	*2,100	*3,000	1,850	6.7
-3	kg		*6,400	*5,600	*4,600	3,100			*3,100	*2,250	5.8

Blade Up

B/A (m)	1.5		3.0		4.5		6		MAX REACH		A (m)
	Cf	Cs	Cf	Cs	Cf	Cs	Cf	Cs	Cf	Cs	
6	kg				*3,650	*3,650			*2,050	*2,050	5.8
4.5	kg		*4,200	*4,200	*3,900	*3,900	*3,500	2,450	*2,050	2,050	6.7
3	kg		*6,550	*6,550	*4,550	3,650	*3,750	2,350	*2,050	1,750	7.2
1.5	kg				*5,300	3,350	3,950	2,250	*2,600	1,700	7.3
0	kg		*5,000	*5,000	*5,650	3,100	3,850	2,150	*2,450	1,700	7.2
-1.5	kg		*7,900	5,450	*5,450	3,050	3,800	*2,100	*3,000	1,850	6.7
-3	kg		*6,400	*5,600	*4,600	3,100			*3,100	*2,250	5.8

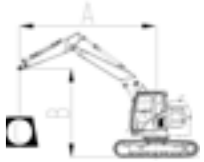
LIFTING CAPACITY (METRIC)

915FCR with 700 mm Shoes, TWO-PIECE Boom, 2,500 mm Arm

Conditions

- A: Load radius
- B: Load point height
- C: Lifting capacity rating
- Cf: Rating loads over front
- Cs: Rating loads over side or 360°

- Boom length: 5,050 mm
- Arm length: 2,500 mm
- Shoes: 700 mm triple grouser shoes
- Bucket: None
- Counterweight: 3,500 kg
- Blade: YES



Blade Down

B/A (m)	1.5		3.0		4.5		6		MAX REACH		A (m)
	Cf	Cs	Cf	Cs	Cf	Cs	Cf	Cs	Cf	Cs	
6	kg				*3,650	*3,650			*2,050	*2,050	5.8
4.5	kg		*4,200	*4,200	*3,900	*3,900	*3,500	2,500	*2,050	2,050	6.7
3	kg		*6,550	*6,550	*4,550	3,700	*3,750	2,400	*2,050	1,800	7.2
1.5	kg				*5,300	3,400	*4,000	2,300	*2,600	1,700	7.3
0	kg		*5,000	*5,000	*5,650	3,200	*4,200	2,200	*2,450	1,700	7.2
-1.5	kg		*7,900	5,550	*5,450	3,100	*4,000	*2,150	*3,000	1,900	6.7
-3	kg		*6,400	*5,700	*4,600	3,150			*3,100	*2,300	5.8

Blade Up

B/A (m)	1.5		3.0		4.5		6		MAX REACH		A (m)
	Cf	Cs	Cf	Cs	Cf	Cs	Cf	Cs	Cf	Cs	
6	kg				*3,650	*3,650			*2,050	*2,050	5.8
4.5	kg		*4,200	*4,200	*3,900	*3,900	*3,500	2,500	*2,050	2,050	6.7
3	kg		*6,550	*6,550	*4,550	3,700	*3,750	2,400	*2,050	1,800	7.2
1.5	kg				*5,300	3,400	4,000	2,300	*2,600	1,700	7.3
0	kg		*5,000	*5,000	*5,650	3,200	3,900	2,200	*2,450	1,700	7.2
-1.5	kg		*7,900	5,550	*5,450	3,100	3,850	*2,150	*3,000	1,900	6.7
-3	kg		*6,400	*5,700	*4,600	3,150			*3,100	*2,300	5.8



Lifting capacity at the arm end without bucket. For lifting capacity including bucket, weight of the bucket or the bucket with quick coupler must be deducted from the lifting capacities.

Lifting capacities are based on the machine standing on a firm, uniform supporting surface.



Rating over-front (Cf)



Rating over-side (Cs)

- Do not attempt to lift or hold any load that is greater than these rated values at their specified load radius and height. Weight of all accessories must be deducted from the above lifting capacities.
- The rated loads are in compliance with ISO 10567 Hydraulic Excavator Lift Capacity Rating Standard. They do not exceed 87% of hydraulic lifting capacity or 75% tipping load.
- Ratings at bucket lift hook.
- Lifting capacities are based on machine standing on level, firm and uniform ground.
- *Indicates the load is limited by hydraulic capacity rather than tipping capacity.
- Operator should be fully acquainted with the Operator's and Maintenance Instructions before operating this machine and rules for the safe operation of equipment should be adhered to at all times.

LIFTING CAPACITY (METRIC)

915FCR with 500 mm Shoes, TWO-PIECE Boom, 2,500 mm Arm

Conditions

Boom length: 5,050 mm
 Arm length: 2,500 mm
 Shoes: 500 mm rubber track shoes
 Bucket: None
 Counterweight: 3,500 kg
 Blade: YES



A: Load radius
 B: Load point height
 C: Lifting capacity rating
 Cf: Rating loads over front
 Cs: Rating loads over side or 360°

Blade Down

B/A (m)	1.5		3.0		4.5		6		MAX REACH		A (m)
	Cf	Cs	Cf	Cs	Cf	Cs	Cf	Cs	Cf	Cs	
6	kg				*3,650	*3,650			*2,050	*2,050	5.8
4.5	kg		*4,200	*4,200	*3,900	3,850	*3,500	2,400	*2,050	2,000	6.7
3	kg		*6,550	6,550	*4,550	3,550	*3,750	2,300	*2,050	1,750	7.2
1.5	kg				*5,300	3,250	*4,000	2,200	*2,600	1,650	7.3
0	kg		*5,000	*5,000	*5,650	3,050	*4,200	2,100	*2,450	1,650	7.2
-1.5	kg		*7,900	5,300	*5,450	3,000	*4,000	*2,050	*3,000	1,800	6.7
-3	kg		*6,400	*5,450	*4,600	3,050			*3,100	*2,200	5.8

Blade Up

B/A (m)	1.5		3.0		4.5		6		MAX REACH		A (m)
	Cf	Cs	Cf	Cs	Cf	Cs	Cf	Cs	Cf	Cs	
6	kg				*3,650	*3,650			*2,050	*2,050	5.8
4.5	kg		*4,200	*4,200	*3,900	3,850	*3,500	2,400	*2,050	2,000	6.7
3	kg		*6,550	6,550	*4,550	3,550	*3,750	2,300	*2,050	1,750	7.2
1.5	kg				*5,300	3,250	3,850	2,200	*2,600	1,650	7.3
0	kg		*5,000	*5,000	*5,650	3,050	3,750	2,100	*2,450	1,650	7.2
-1.5	kg		*7,900	5,300	*5,450	3,000	3,700	*2,050	*3,000	1,800	6.7
-3	kg		*6,400	*5,450	*4,600	3,050			*3,100	*2,200	5.8

STANDARD EQUIPMENT

ENGINE SYSTEM

- Cummins F3.8 engine, EU Stage V, turbo-charged, 4 cylinder, 4 stroke, water cooled
- 3-power modes (Power, Standard, Economy)
- Engine overheat prevention system
- Engine oil low pressure protection
- Auto-idle speed control
- Automatic engine shutdown
- Twin-core air filter with integrated pre-filter
- Plastic fuel tank
- Manual fuel lifting pump
- Fuel pre-filter with water separator and water detection
- Remote engine oil filter
- Ground level engine oil gauge
- Lockable engine oil gauge
- Radiator dust-proof net
- Air conditioner compressor belt automatic tense
- 20°C cold start capability
- Electric refueling pump with auto shutoff

HYDRAULIC SYSTEM

- Full electric control hydraulic system
- Power boost function
- Pilot control shut-off lever
- Pilot accumulator
- Automatic swing parking brake
- Swing with anti-reverse function
- Automatic two-speed travel
- Automatic travel parking brake
- Boom and arm holding valves
- Hand proportional control auxiliary dual way pipes
- Hand proportional control auxiliary swing pipes
- PTO max flow with manual control
- Auxiliary single-double hydraulic lines exchange on the monitor
- Auxiliary dual pipe flow & pressure adjustable
- Attachment oil drain line

OPERATOR STATION

- Pressurized and sealed cab
- ROPS certified cab
- Lower windshield can be removable
- Openable front windshield with assist device

- Large roof window with slide sliding sun visor
- Air suspension deluxe seat (with heater and head rest) +retractable seat belt (75 mm [3 in] width, red colour, with green alarm lamp)
- Consoles and seat height adjustable follow-up
- 8 inches high resolution LCD touch screen + integrated control panel
- Automatic air conditioner, heater, defroster
- Fire extinguisher
- Safety hammer for cab evacuation
- Green safety glass
- Cab interior lighting
- Left armrest box can be reversed

ELECTRICAL SYSTEM

- Monitor: working mode, working hour, water temperature, oil temperature, fuel level, DEF level, fuel consumption, rear vision, fault code, work condition etc. machine information.
- Warn: low engine oil pressure, low fuel level, air filter clog, machine overheat, low coolant level, low DEF level, maintenance remind etc.
- Two maintenance free battery
- Battery disconnect switch
- Front window wiper with time adjustable intermittent feature
- AM/FM radio with auxiliary input
- Blue tooth
- Working lights close time delay by programmable
- Cab interior decoration lights close time delay by programmable
- Ground level engine shutoff switch
- Left boom working light
- Right platform working light
- Rear and right side view cameras
- Set password for auxiliary hydraulic-flow adjustments
- Work tool flow and pressure programmable memories
- Control pattern-change valve
- Overload warning device
- Travel alarm
- Rotating beacon
- Rotating warning light

- Reserved installation seat and wiring harness for double warning lights in the cab
- Right boom working light
- 360° view
- Cab LED ceiling lights (4 in front and 2 in rear)
- Reserved installation seat and wiring harness for the long strip cab LED ceiling lights
- 12 V power supply

UNDERCARRIAGE

- Standard track undercover
- 500 mm track-shoes with triple grousers
- Rollers, bottom - 7 each side
- Rollers, top - 2 each side
- 1 piece track guards (each side)
- Travel motor guards
- Centralized lubrication for swing bearing
- Towing eye on base frame
- Traction hole on base frame
- 2 piece track guards (each side)
- Reinforced track undercover

UPPER STRUCTURE

- Punched metal anti-slip plates
- Foot pedal is in engine room
- Tool box
- Standard frame undercover
- One key for all locks
- 3,000 kg counterweight
- 500 kg extra counterweight
- Reinforced frame undercover

DIGGING EQUIPMENT

- 4,600 mm MONO boom
- 2,500 mm arm
- Arm front end with guard bars
- Manual centralized lubrication on boom
- Bucket cylinder rod protect

SERVICE & MAINTENANCE

- Maintenance tool kit
- Maintenance parts package
- Data diagnostic port
- Self-diagnostic system

OPTIONAL EQUIPMENT

HYDRAULIC SYSTEM

- High pressure quick-coupler pipes

OPERATOR STATION

- Cab lower window guard
- Cab top guard
- Openable cab front guard
- Sunscreen
- Front window rain visor
- Cab front guard and top guard (falling object protective structure)

ELECTRICAL SYSTEM

- Quicker-coupler opening warning
- Starting code

UNDERCARRIAGE

- 600 mm track-shoes with triple grousers
- 700 mm track-shoes with triple grousers and auxiliary track footrest
- 800 mm track-shoes with triple grousers
- 500 mm rubber block track
- 500 mm track shoes with bolt-on rubber pads
- Dozer with locking function
- Dozer with floating function

UPPER STRUCTURE

- Guard fence of upper frame around

DIGGING EQUIPMENT

- Bucket linkage with lifting eye
- Bucket lifting hole
- 2,100 mm short reach arm
- 2,900 mm long reach arm
- 5,050 mm Two pieces boom



Guangxi LiuGong Machinery Co., Ltd.
No. 1 Liutai Road, Liuzhou, Guangxi 545007, PR China
T: +86 772 388 6124 E: overseas@liugong.com
www.liugong.com

Like and follow us:



LG-PB-EU-915FCR-24-112021-ENG

The LiuGong series of logos herein, including but not limited to word marks, device marks, letter of alphabet marks and combination marks, as the registered trademarks of Guangxi LiuGong Group Co., Ltd. are used by Guangxi LiuGong Machinery Co., Ltd. with legal permission, and shall not be used without permission. Specifications and designs are subject to change without notice. Illustrations and pictures may include optional equipment and may not include all standard equipment. Equipment and options varies by regional availability.