



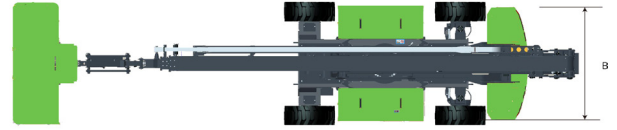
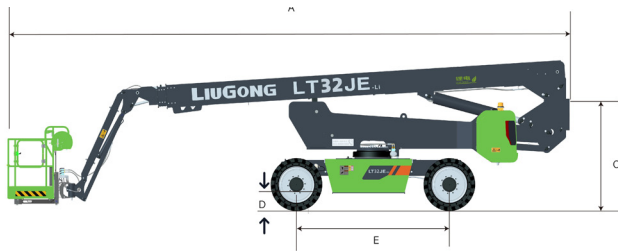
**Working Height Max.**  
**Horizontal Reach Max.**  
**Overall Lift Capacity Max.**  
  
**Overall Width and Length**

34 m (111'7")  
21.8 m (71'6")  
300 / 454 kg  
(661 / 1,000 lb)  
2.44 m x 11.76 m  
(8' x 38'7")

# **LT32JE**

## **Telescopic Boom Lifts-Electric**

# LT32JE SPECIFICATIONS >>>



## DIMENSIONS

Working Height Max.	34 m (111'7")
Platform Height Max.	32 m (104'11")
Horizontal Reach Max.	21.2 m (69'7")
Platform Size (LxWxH)	2.44 x 0.91 x 1.1 m (8' x 2'11" x 3'7")
A. Length (Stowed/Transport)	11.76 / 11.8 m (38'7" / 38'9")
B. Width (Stowed/Transport)	2.44 / 2.27 m (8' / 7'5")
C. Height (Stowed/Transport)	2.78 / 2.54 m (9' / 8'4")
D. Ground Clearance	0.3 m (11")
E. Wheelbase	3 m (9'10")

## PRODUCTIVITY

Overall Lift Capacity Max.	300 / 454 kg (661 / 1,000 lb)
Platform Occupancy Max.	2
Platform Rotation	± 90°
Vertical Jib Rotation (Up/Down)	-65° ~ +70°
Turntable Rotation	360° Continuous
Turntable Tailswing (Boom Raised/Stowed)	1.6 / 2.6 m (5'3" / 8'6")
Drive Speed (Stowed)	5 km/h (3.1 mph)
Drive Speed (Raised)	1 km/h (0.6 mph)
Gradeability	45%
Tilt Sensor Activation (Side to Side/Front to Back)	X 5° / Y 5°
Turning Radius (Inside/Outside)	3.6 / 6.8 m (11'10" / 22'4")
Tire Size (Solid Off-road)	385 / 65 - 24
Drive Steering Type	4WD x 2WS

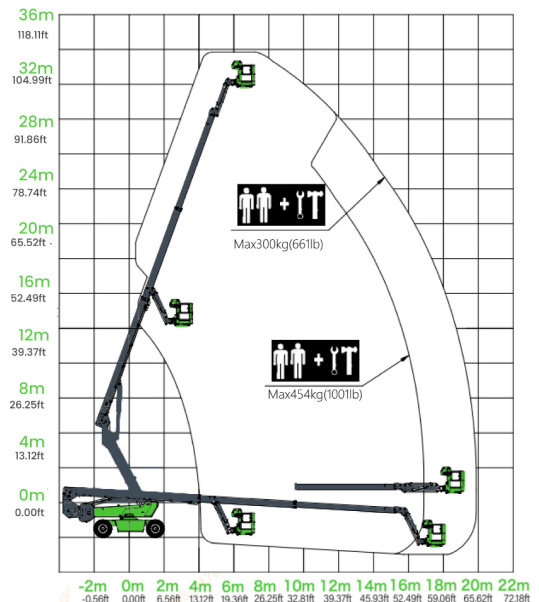
## WEIGHT

Overall Weight	18,950 kg (41,777 lb)
----------------	-----------------------

## POWER

Battery (Lithium)	83.72 V / 519 Ah
Charger	80 V / 80 A
Lifting Motor	AC 30 kW
Drive Motor	AC 5.2 kW
Auxiliary Power Unit	12 VDC
Hydraulic Tank Capacity	140 L (36 gal)

LT32JE Working Range



## Guangxi Liugong Machinery Co., Ltd.

No. 1 Liutai Road, Liuzhou, Guangxi 545007, PR China  
 T: +86 772 3886124 E: overseas@liugong.com  
 www.liugong.com

09/2024 Designed by LiuGong

Specifications and designs are subject to change without notice. Machines shown may include optional equipment. LiuGong standard and optional equipment may vary from region to region. Please consult your LiuGong dealer for information specific to your area. Engine power kW is converted to horsepower (1 kW=1.3596 ps and 1 kW=1.3410 hp) in this file.